

**ALL SHIPS ENTERING HARBOURS  
IN THE GULF OF BOTHNIA: WHEN  
PASSAGE AT SVENSKA BJÖRN  
N 59 30 E 20 01 CONTACT  
VTS GAVLE VHF CHANNEL 84**

### SYMBOLS

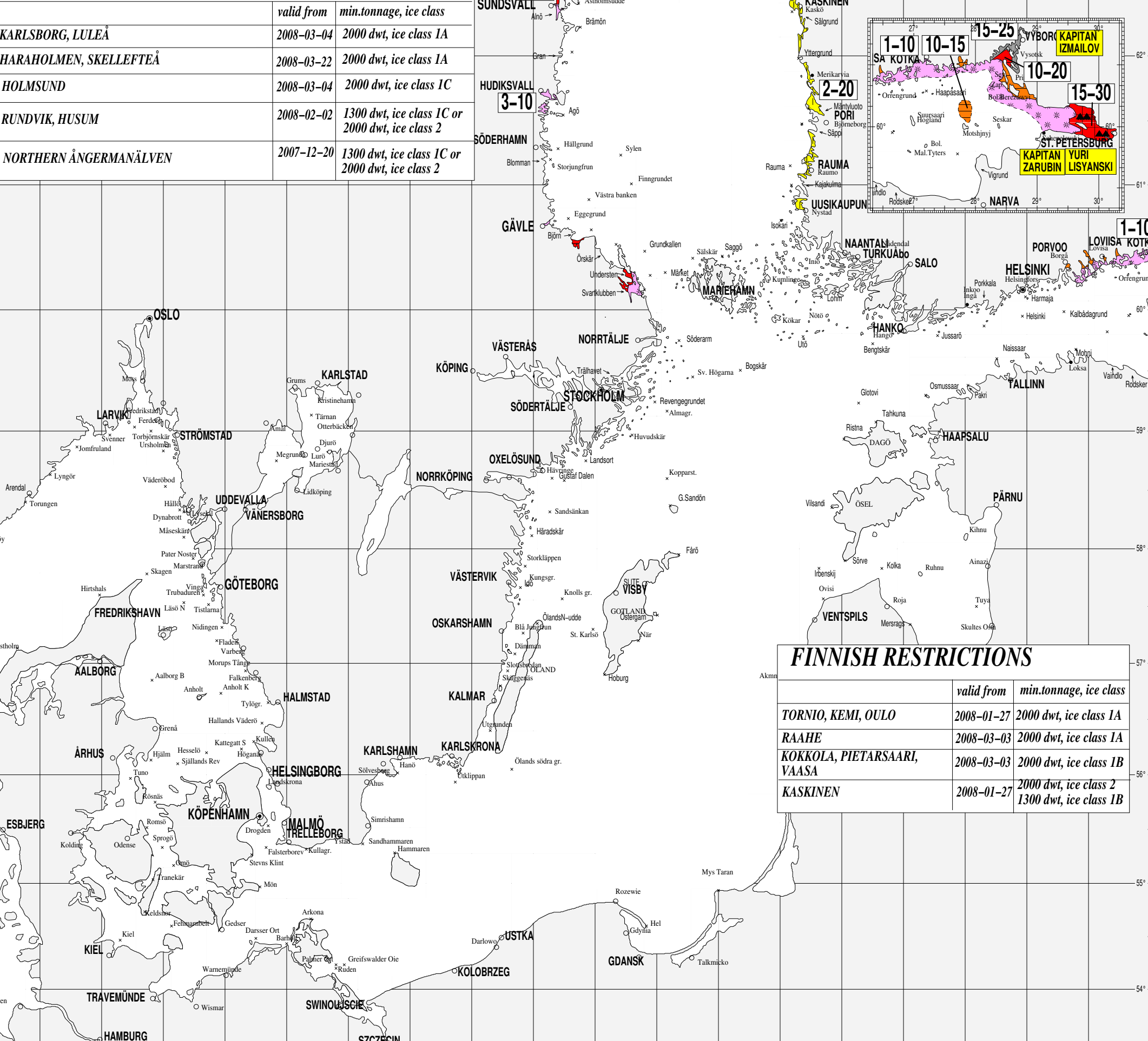
	Fast is Fast ice		Vallar och upptornad is Ridges or hummocked ice
	Sammanfrusen, kompakt eller mycket tät dravis Consolidated, compact, or very close pack ice (9-10/10)		Hopskjuten is Rafted ice
	Tät dravis Close pack ice (7-8/10)		Iskant/Ice edge
	Spridd dravis Open pack ice (4-6/10)		Uppskattad isgräns Estimated ice boundary
	Mycket spridd dravis Very open ice (1-3/10)		Råk Lead
	Öppet vatten Open water, (<1/10)		Stampvall Windrow, brash barrier
	Nysis New ice (>7/10)		Isbumlingar Floeborgs/floebits
	Jämn is Level ice (>7/10)		Vattentemp isotherm °C Water temp isotherm °C
	Spricka Crack	<b>W or C</b>	Varmt/kallt maximum Warm/cold maximum

		<b>C</b> = koncentration i tiondelar <i>C</i> = Concentration in tenths
<b>S</b>		<b>S</b> = Istjocklek <i>S</i> = Stage of development
<b>F</b>		<b>F</b> = Form av is/flakstorlek <i>F</i> = Form of ice/floe size

<b>S</b>	<b>F</b>
Code	Code
cm	O/m
0	0
1	1
2	2
3	3
4	4
5	5
6	6
7	7
8	8
X	9
1.	

### SWEDISH RESTRICTIONS

	valid from	min.tonnage, ice class
KARLSBORG, LULEÅ	2008-03-04	2000 dwt, ice class 1A
HARAHOLMEN, SKELLEFTEÅ	2008-03-22	2000 dwt, ice class 1A
HOLMSUND	2008-03-04	2000 dwt, ice class 1C
RUNDBIK, HUSUM	2008-02-02	1300 dwt, ice class 1C or 2000 dwt, ice class 2
NORTHERN ÅNGERMANÄLVEN	2007-12-20	1300 dwt, ice class 1C or 2000 dwt, ice class 2



### FINNISH RESTRICTIONS

	valid from	min.tonnage, ice class
TORNIO, KEMI, OULU	2008-01-27	2000 dwt, ice class 1A
RAAHE	2008-03-03	2000 dwt, ice class 1A
KOKKOLA, PIETARSAARI, VAASA	2008-03-03	2000 dwt, ice class 1B
KASKINEN	2008-01-27	2000 dwt, ice class 2 1300 dwt, ice class 1B